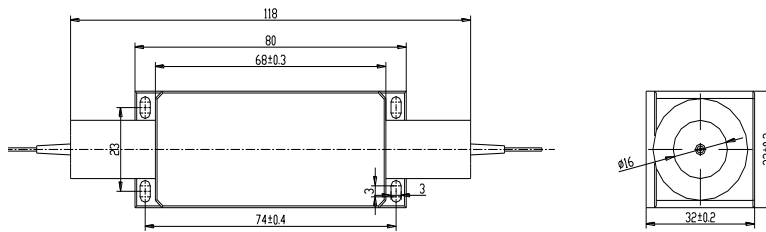


## High Power Polarization Maintaining Fiber Optical Isolator 1050, 1053±50nm

The 1050, 1053nm High Power Broadband Polarization Maintaining (PM) Fiber Optical Isolator is an in-line micro-optic component that allows light to be transmitted only in the forward direction while blocking the backward transmission. It's built with PM Panda fiber and designed to maintain the polarization of the input light with high extinction ratio. The PM isolators are commonly used to protect lasers or amplifiers against back-reflected light.



### Features

- High Isolation
- High Extinction Ratio
- Broadband
- High Power Handling

### Applications

- Fiber Amplifier
- Fiber Laser
- Fiber Sensor
- Lab & Research

### Performance Specification

Parameter	Value	Unit
Center Wavelength	1050, 1053 or customized	nm
Bandwidth	±50	nm
Typ. Peak Isolation	33	dB
Min. Isolation at 23°C	26	dB
Typ. Insertion Loss at 23°C	1	dB
Max. Insertion Loss at -5 to 50°C	1.5	dB
Min. Extinction Ratio for Fast Axis Blocked Type	22	dB
Min. Extinction Ratio for Both Axis Working Type	20	dB
Min. Return Loss	50	dB
Max. Optical Power (Continuous Wave)	1, 3, 5, 10, 15, 20	W
Max. Tensile Load	5	N
Fiber Type	PM 980 Panda Fiber or PM LMA Fiber	
Operating Temperature	-5 to +50	°C
Storage Temperature	-40 to +85	°C
Package Dimension		mm

### Note

- \* Don't add connectors for devices more than CW 1W.
- \* The PM fiber and the connector key are aligned to the slow axis.

### Ordering Information

#### HPMBI-AAAA-BB-C-DD-EE-F-GG

AAAA	BB	C	DD	EE	F	GG
Wavelength	Fiber Type	Fiber Jacket	Fiber Length	Connector	Working Axis	Power
1050 - 1050nm	P9 - PM 980 Fiber	B - 250um Bare	05 - 0.5m	NE - None	F - Fast Axis	01 - 1W
1053 - 1053nm	LM - PM LMA Fiber	Fiber	08 - 0.8m		Blocked	03 - 3W
1060 - 1060nm	SS - Specify	L - 900um Loose	10 - 1.0m		B - Both Axis	05 - 5W
1064 - 1064nm		Tube	15 - 1.5m		Operating	10 - 10W
SSSS - Specify			SS - Specify			15 - 15W
						20 - 20W
						SS - Specify