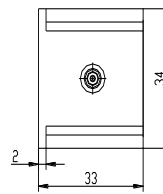
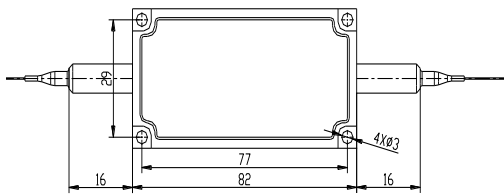


Polarization Maintaining Optical Isolator 930 940nm

The 930 940nm Polarization Maintaining (PM) Optical Fiber Isolator is an in-line micro-optic component that allows light to be transmitted only in the forward direction while blocking the backward transmission. It's built with PM Panda fiber and designed to maintain the polarization of the input light with high extinction ratio. The PM isolators are commonly used to protect lasers or amplifiers against back-reflected light. High power 930nm PM isolator available upon request.



Features

- High Isolation
- High Extinction Ratio
- High Power Available upon Request

Applications

- Fiber Amplifier
- Fiber Laser
- Fiber Sensor
- High Speed Optical Communications Instrumentations

Performance Specification

Parameter	Value	Unit
Center Wavelength	930, 940 or customized	nm
Bandwidth	±15	nm
Typ. Isolation	30	dB
Min. Isolation at 23°C	25	dB
Typ. Insertion Loss at 23°C	1.1	dB
Max. Insertion Loss at -5 to 50°C	1.5	dB
Min. Extinction Ratio	18	dB
Max. WDL	0.3	dB
Min. Return Loss	50	dB
Max. Optical Power (Continuous Wave)	500 (higher power available upon request)	mW
Max. Tensile Load	5	N
Fiber Type	PM 850 Panda Fiber on Input & Output Port	
Operating Temperature	-5 to +50	°C
Storage Temperature	-40 to +85	°C
Package Dimension		mm

Note

- * For devices with connectors, IL will be 0.3dB higher, RL will be 5dB lower and ER will be 2dB lower.
- * The PM fiber and the connector key are aligned to the slow axis.
- * Package dimension may change without notice, for details, please confirm before placing order.

Ordering Information

PMI-AAA-B-CC-DD-E

AAA	B	CC	DD	E
Wavelength	Fiber Jacket	Fiber Length	Connector	Working Axis
930 - 930nm	B - 250um Bare	05 - 0.5m	NE - None	F - Fast Axis
940 - 940nm	Fiber	08 - 0.8m	FA - FC/APC	Blocked
SSS - Specify	L - 900um Loose	10 - 1.0m	FP - FC/PC	B - Both Axis
	Tube	15 - 1.5m	SA - SC/APC	Operating
		SS - Specify	SP - SC/PC	
			LA - LC/APC	
			LP - LC/PC	
			SS - Specify	